



**Charles
University**

The Hidden Treasures of Social Work

**International Days in Social Work
April 28–30, 2025**

**Protestant Theological Faculty
of Charles University**

The Hidden Treasures of Social Work

In societies, social work often remains hardly visible, though it helps to improve human lives and sustain social cohesion in an unstable and permanently transforming world.



Dear colleagues and Erasmus partners,

The Department of Social Work of the Protestant Theological Faculty, Charles University, Prague, is pleased to announce the International Days in Social Work that will be held from April 28–30, 2025. This event aims to foster and deepen our international collaboration and to create a space for sharing our experiences and knowledge. During the three-day programme, teachers are invited to give presentations, lectures, or lead workshops or discussions. As a part of the programme, we will offer site visits to social services organisations and organise plenary discussions and student group activities. All schools will have the opportunity to present their study programmes in an informal open meeting. The organisers will issue a Certificate of Student Attendance for international students and students enrolled in the course *RPZ04 International Social Work* at the Protestant Theological Faculty.

Let us enjoy an exceptional opportunity to share our knowledge, skills and motivation for social work in international contexts.

The Organisational team:

Eva Křížová, Eliška Hudcová, Alžběta Matochová,
with the support and participation of teachers and staff from the Department of Social Work and other departments of the Protestant Theological Faculty, Charles University, Prague, Czech Republic.



Welcome in Prague

Prague is a modern, vibrant city with a well-preserved historic centre protected by the UNESCO heritage. Prague is typical of many diverse architectural and historical monuments from different cultural and developmental periods, ranging from Romanesque architecture through various styles of Gothic to Renaissance and Baroque or Classicism styles. Art Nouveau and Cubist architecture are adding a specific and unique cultural value. The dominant of Prague is the Prague Castle, founded in the 9th century, with the cathedral dating back to the 14th century. Historical monuments like the Charles Bridge, Karlstejn castle and also Charles University, founded in 1348, are associated with the name and effort of the Bohemian king and Holy Roman Emperor Charles IV., an important medieval European ruler.

More information at www.prague.eu/en/objevujte/



Charles University

is the oldest university in Central Europe, north of the Alps, and today represents the most significant centre of knowledge, science, and education in the Czech Republic (more information at www.cuni.cz/UKEN-1.html). The Protestant Theological Faculty is part of the Charles University (more details at www.web.etf.cuni.cz/ETFENG-1.html).

The Protestant Theological Faculty

is one of the 17 Charles University faculties (CU) faculties. Initially, it was established in 1919 as the Huss Czechoslovak Protestant Theological Faculty, an autonomous institute with all the rights and privileges of a university (including the right of graduation), not as a part of Charles University. After tremendous history, it was incorporated into the body of Charles University in 1990 as a Protestant Theological Faculty (PTF).



The faculty is based on personal relationships, mutual dialogue, respect, and professionalism. It is the only one in the Czech Republic offering classical studies in Evangelical Theology, as well as studies in Christian traditions and ecumenical theology, social and pastoral work, diaconal studies and philosophy. It helps train and educate professionals for spiritual, diaconal, social and pastoral work in churches, other organisations, communities and public and private institutions. It offers bachelor's, continuing master's, and doctoral studies. PTF believes that the best people make the best university. It, therefore, emphasises attracting quality staff and targeted support for talented students. It strives for high expertise in internationally competitive research, internationalisation, and interdisciplinarity.

The Department of Social Work was established in 2013 and organises a bachelor study programme in Social and Pastoral Work.



Conference venue

The International Days in Social Work are held in the building of the Protestant Theological Faculty, right in the city centre, Prague 1, Černá Street 9, 1st floor, not far away from the National Theatre or Charles Square.

Travel instruction

Prague is easily accessible by air. From the Vaclav Havel airport, you can take bus line 119 directly to the metro station Veleslavín. You can continue with line A to the city centre, in the direction of Depo Hostivař. It is also possible to choose bus number 100, which will take you to the end of metro B Zličín. Bus tickets for the journey from the airport to the city are available at the vending machines on the bus platform.

For those arriving by train, the centre of Prague is well accessible either on foot or by various Metro lines, especially A or C or other means of public transport. In Prague, the Czech crown is the local currency (1 Euro is approximately 24 CZK), but you can often pay by card or use Euro.



Organisational

For those who contribute with a conference fee, the conference offering includes a three-day pass for public transportation (April 28–30) and refreshments during the conference.

Accommodation

Participants are responsible for organising their accommodation independently.

Registration of international guests and students

will be open on Monday, April 28, from 9:15 on the first floor (open space). Registered participants will receive a conference bag with complete information.



Annotation of papers, lectures, workshops and activities

(listed in line with the programme chronology)

Jaroslava Šťastná, Charles University, Protestant Theological Faculty, Department of Social Work, Prague (CZ)

Social Work in Marginalised Regions in the Czech Republic

Monday 11:00-11:40, Room A

The paper opens a discussion on the form of social inequalities that social work seeks to alleviate in practice. Social science disciplines include theories that analyse the phenomenon of social inequalities. However, the paper focuses on the specific situation in the Czech Republic from the perspective of social work. It thematises the use of social work approaches and methods in three regions of the Czech Republic, ranked among the so-called socially weak regions, some parts of which are mentioned as socially excluded areas. Although the EU cohesion policy has consistently aimed at levelling out regional disparities, the experience of social workers in these regions shows persistent problems that, in some respects, are even deepening. The paper presents the current state of application of social work methods, supported by data from empirical surveys carried out among social service providers and other relevant institutions in three regions. Survey results have shown high respect for social and community work among respondents; however, public social policies and institutions are unprepared to pay more profound attention to effective approaches and methods. It proved the inadequacy of the current legal framework, lacking systemic financing, the rigidity of a part of public authorities and, paradoxically, also of some of the key social institutions.



Christian Stark, University of Applied Sciences of Upper Austria,
Linz (AT)

***Participation in Social Work,
Monday 11:40-12:00, Room A***

The presentation describes the possibilities and limitations of service user participation using the example of homelessness. Participation involves individuals, groups, and communities in decision-making processes that directly or indirectly affect them. The paper shows forms and approaches to participation and gives concrete examples of participation practices in service user organisations for homeless people. It will be underlined that participation is a matter of power and that the transfer of power is a measure of participation.

Berthold Dietz, Protestant University of Applied Sciences,
Freiburg (DE)

***Hidden treasures require offensive strategies!
Re-orientating social work in transformative societies.
Monday 11:40-12:00, Room A***

Social work must deal with failures such as a fixation on state structures, a lack of organisation and underestimated social change. Old patterns are unsuitable for new problems, as climate adaptation and structural change require more than just focusing on vulnerable groups and poverty risks. Social work can shape transformation processes by understanding corporate social work, new social work, and feminisation as opportunities to escape exploitability and psychosocial-structural vulnerability.



What are social innovations, and why do we need them?

(Workshop)

Tuesday 11:00-12:15, Room A

Social innovations are not created by decision but through strategic considerations and the breaking of systems. Innovations require improvisation, which should be seen as a primary resource. They change resources, roles, and goals and are experimental and not projectable. Expansion and diversification are not innovations; diversity is required instead of standardisation. Innovations enable us to look at ourselves critically and be authentic.

Jiří Pasz, Lutheran World Federation

Hope for What? Humanitarian and development activities of the Lutheran World Federation (LWF)

Tuesday 9:00-9:45, Room A

The paper will present the humanitarian and development activities of the Lutheran World Federation in the Czech Republic and global context with a special focus on values and principles, like justice, inclusion, human dignity and hope, which are the backbone of the activities at national and international level. In a world marked by crises, displacement, and inequality, hope is more than an abstract ideal—it drives change. The lecture explores the role of hope as a catalyst for humanitarian and development work. We will examine how LWF translates hope into tangible social action through emergency response, refugee support, peace-building, and sustainable development to recover in war-torn regions or communities affected by climate change. LWF provides not only material aid but also empowerment, respect for dignity, and long-term resilience for those in need.



Michal Imrovič, Peter Slovák, University of Ss. Cyril and Methodius in Trnava, Faculty of Social Sciences, Institute of Social Work and Social Policy (SK)

The conative dimension of the social worker's personality,
Tuesday 9:45-10:30, Room A

The personality structure exhibits various dimensions. In addition to the affective and cognitive dimensions, the conative aspect is essential to the practice of the profession. The preparation of undergraduate students in social work is intended to be an evaluative process of empowering future professionals in the areas of will and character qualities. Through focus groups implemented with students of the Institute of Social Work and Social Policy, we identified the perceived attributes of the helping professional's conative character that are essential to the profession's practice.

Olga Starostová, Charles University, Protestant Theological Faculty, Department of Social Work, Prague (CZ)

Societal support of informal care
Tuesday 11:00-11:30, Room B

Care about loved ones within the family is widespread and natural in contemporary Czech society. Informal carers are a crucial pillar of household-integrated support and care. However, there are many challenges in this area: care allowances, work-life balance, and the well-being of carers, including their mental health. Ministry of Labour and Social Affairs offers the results of a public opinion survey on Caring persons in Czechia, 2024. Considering the demographic development, alternative ways of care and support are really important.



Daniel Bartoň, Charles University, Protestant Theological Faculty, Department of Social Work, Prague (CZ)

Rape, religion and social work

Tuesday 11:30-12:10, Room B

Sex abuse scandals in religious environments have drawn substantial public attention. Is religion prone to abuse? Are religious institutions any worse than the secular ones? How can social workers be of service to religious organisations and their victims? These are some of the questions that might be discussed at the workshop.

Petronela Polixenia Nistor, University Alexandru Ioan Cuza, Orthodox Theological Faculty, Iași (RO)

The importance of collaboration between the social worker and the priest in promoting intergenerational dialogue

Wednesday 9:05-9:25, Room A

This paper emphasises the importance of collaboration between the social worker and the priest in promoting intergenerational dialogue. Effective cooperation between these social actors, who are part of the multidisciplinary team, is essential for developing programs that highlight and exploit the experience and wisdom of various age groups. Through joint initiatives, interaction between young people and the elderly is encouraged, fostering social well-being for all beneficiaries and creating a more united and resilient community focused on a sustainable future.



Petr Jandejsek, Charles University, Protestant Theological Faculty, Ecumenical Institute, Prague (CZ)

Poverty in interdisciplinary perspective – between social work and theology

Wednesday 9:25-9:45, Room A

The paper will be structured in two parts. The first will briefly examine how helping the poor and needy is reflected in the monotheistic faith traditions of Judaism, Christianity, and Islam. We will then investigate what image of God solidarity grows out of and what concrete forms it takes. In the second part, we will look closer at the view of poverty as a social or structural sin. Latin American liberation theology thinks of poverty - in contrast to the ideology of economic liberalism - as a manifestation of alienation between people and, in turn, as the result of a damaged image of God.

Ondřej Fischer, Charles University, Protestant Theological Faculty, Department of Theological Ethics, Prague (CZ)

Social Work at Theological Faculties - only for Christians?

Wednesday 9:45-10:05, Room A

It is acknowledged that both the place of studies of Theology within the Social Work curricula and the place of Social Work courses at Theological Faculties make sense only for those who can see Social Work practised only in a Christian context. While there will be some specific features of Christian Social Work acknowledged that can justify Theology being a part of its training, arguments and examples will be offered which would support the view that a non-denominational view on Social Work can benefit from a certain depth of theological perspective introduced to its students as a part of their professional training.



Karel Řezáč, Charles University, Protestant Theological Faculty,
Department of Social Work, Prague (CZ)

***Introduction to social protection of children
in the Czech Republic***

Wednesday 9:00-10:10, Room B

The contribution explores the practice of social and legal child protection in the Czech Republic, focusing on the differences between the lived experiences of children in institutional care and foster care. The Czech Republic has faced repeated criticism from international organisations due to the high number of children placed in institutional care.

Since 2013, the country has been systematically transforming its child protection system to support vulnerable children better. The presentation includes a screening the documentary *Back to Life*, which captures the lives of children growing up in Czech institutional care and an overview of supportive social services to ensure that every child can grow up in a family environment.



Programme

Monday, 28. 4. 2025

9:15–10:00	Registration of participants: 1st floor, open space
10:00–12:30	Room A
10:00–10:10	Welcome and opening <i>Assoc. Prof. Jan Roskovec, Ph.D. (Dean of the PTF CU)</i>
10:15–11:00	Introduction to the Protestant Theological Faculty and the Social and Pastoral Work Study Programme <i>Eva Křížová*</i> Organizational details on the three-day programme <i>Eliška Hudcová and Alžběta Matochová</i>
11:00–11:30	Key note: Social Work in Marginalised Regions in the Czech Republic <i>Jaroslava Šťastná</i>
11:30–12:30	Guest lectures: Participation in Social Work (25') <i>Christian Stark (University of Applied Sciences Upper Austria, Linz)</i> Hidden treasures require offensive strategies! Re-orientating social work in transformative societies (25') <i>Berthold Dietz (University of Applied Sciences, Freiburg im Breisgau)</i> Short discussion (10')
12:30–13:30	Refreshment
13:30–15:00	Informal market of schools with social work study programmes – Prague, Linz, Jaši, Freiburg im Breisgau, Nürnberg, Tartu, Ludwigsburg, Trnava
15:00–15:15	Organisational
15:15–16:00	Coffee break
	Enrolment for site visits on April 29

**Teachers without affiliation mentioned are the staff of the Dept. of Social Work, Protestant Theological Faculty*

Minor programme change reserved.



Tuesday, 29. 4. 2025

9:00–11:00	Room A		
9:00–10:30	<p>Hope for What? Humanitarian and development activities of the Lutheran World Federation <i>Jiří Pasz (Lutheran World Federation Prague)</i></p> <p>The conative dimension of the social worker's personality <i>Michal Imrovič, Peter Slovák (University of Trnava, Trnava)</i></p>		
10:30–10:40	Short discussion		
10:40–11:00	Coffee break		
11:00–12:15	Room A		Room B
11:00–12:30	<p>Quest workshop:</p> <p>What are social innovations, and why do we need them? <i>Berthold Dietz (Protestant University of Applied Sciences, Freiburg) with Eva Křížová (60')</i></p> <p>Examples of social innovations from your countries – discussion <i>Moderator Eliška Hudcová</i></p>		<p>Societal support of informal care <i>Olga Starostová</i></p> <p>Rape, religion and social work <i>Daniel Bartoň</i></p> <p>Concluding remarks <i>Moderator Alžběta Matochová</i></p>
12:15–12:30	Organisational information – reminder of how site visits will be organised		
12:30–13:30	Lunch break		
	3 group site visits		
13:30–15:30 (16:00)	<p>Kotlaska – Rubikon</p> <p><i>Guide: Alžběta Matochová</i></p>	<p>Community Center Smíchov</p> <p><i>Guide: Eliška Hudcová</i></p>	<p>Život 90</p> <p><i>Guide: Eva Křížová</i></p>
18:00–20:00	Teachers' dinner		



Wednesday, 30. 4. 2025

9–10:10	Room A		Room B
9:00–9:05	Social work at the theological faculties (introduction Eva Křížová)		Social work and child protection
9:05–9:25 *incl. discuss. (20')	The importance of collaboration between the social worker and the priest in promoting intergenerational dialogue <i>Petronela Polixenia Nistor, (University Alexandru Ioan Cuza, Iași)</i>		Introduction to social protection of children in the Czech Republic <i>Karel Řezáč</i>
9:30–9:50* (20')	Poverty in interdisciplinary perspective – between social work and theology <i>Petr Jandejsek (Charles University, Prague)</i>		(compulsory for Czech students in the 2nd school year)
9:50–10:10* (20')	Social Work at Theological Faculties – only for Christians? <i>Ondřej Fischer (Charles University, Prague)</i>		
10:15–10:30	Organizational details to students group activities (<i>Alžběta Matochová</i>) 3 questions/3 hints (identical for all three groups) <i>What are the hidden treasures of social work?</i> <i>In your opinion, is it good or bad that social work remains invisible?</i> <i>Where and how should social work be visible?</i> During your group work, you are invited to reflect on the knowledge and experience you gained from the site visits. You can also give examples or comparisons from your countries. A teacher will tutor students in each group.		
10:30–10:45	Coffee break		
10:45–11:35	Students group work (Room A) <i>Tutor: Karel Řezáč</i>	Students group work (Room B) <i>Tutor: Olga Angelovská</i>	Students group work (Room C) <i>Tutor: Karen-Pauliin Konks (University of Tartu, Tartu)</i>
11:35–12:20	Plenary reports of students group work (15' each group)		
12:20–12:30	Concluding remarks on the groups work – <i>guest teachers and Olga Angelovská and Karel Řezáč.</i>		
12:30–13:30	Lunch break		
13:30–14:45	Plenary, round table of teachers responding to questions collected and raised by students – structured and moderated discussion <i>Moderator: Eva Křížová; Plenary participants: Petronela Polixenia Nistor, Jaroslava Štátná, Berthold Dietz and other guest teachers</i>		
14:50–15:15	Farewell and Coffee break Cultural good bye – faculty students choir		

Student group work

Students will have an opportunity to discuss in small groups the key theme of the International Days related to the hidden treasures of social work. Students will be provided with questions as hints that will be identical for all groups. During the group work, students are invited to reflect on the knowledge and experience they gained from the site visits or give examples or comparisons from their countries. A teacher will tutor students in each group and prepare a short report for the plenary.

What are the hidden treasures of social work?

Is it good or bad that social work remains invisible?

Where and how should social work be visible?



Site visits – Tuesday, April 29, 13.30–15.00



**komunitní
prostor
smíchov**

The **Smíchov Community Space** is a multi-functional space open to the public for cultural, social, or educational activities and serves as a platform for neighbourhood life.

It creates a space for meeting, cooperation and sharing with people in the immediate vicinity across age and social bubbles. It invites families with children in an unfavourable social situation, seniors and members of ethnic minorities, including people from different socio-cultural backgrounds, immigrants and asylum seekers in our area. This is a unique combination of the work of the Evangelical congregation and active people who open the church's gates and the entire space to the public. It is a place of mutual recognition, acceptance, understanding and dialogue. In this way, the church fulfils its diaconal function.

Web: kpsmichov.cz

Address: Na Doubkové 2040/8, 150 00 Praha 5 - Smíchov

Guide: Eliška Hudcová



Photo: František Plzák

The **Rubikon Center** is a non-profit, non-governmental organisation. Since 1994, it has been helping people who have decided to overcome their criminal past. People from the Rubikon Center believe that giving them a second chance in life enables them to become full members of society again—to have a job, solve their debts, take care of family and loved ones, and live a happy life. In the summer of 2017, the Rubikon Center opened the **Community Center and Garden Kotlaska**, which offers services to the public and overlaps the area of integrating people with a criminal past and crime prevention goal. People can relax here in the greenery of the city, get involved in community gardening or attend workshops and courses

Web: kckotlaska.cz

Address: Nad Kotlaskou I, 180 00 Praha 8 - Libeň

Guide: Alžběta Matochová

Photo: RUBIKON Centrum, z.ú.



ŽIVOT⁹⁰

S NÁMI SAMI SEBOU

Život 90 is a non-profit organisation that provides complex social services to the senior population with diverse needs, e.g., counselling, leisure activities, theatre performances, outpatient social services, short-term in-patient services, emergency line and helpline, etc. The organisation was founded shortly after 1990 and has a high reputation.

Web: zivot90.cz

Address: Karoliny Světlé 18, 110 00 Praha 1

Guide: Eva Křížová



Photo: Život90

People

Dean of the Protestant Theological Faculty



Assoc. Prof. Jan Roskovec, Ph.D.

An expert in the New Testament

Teachers from the Department of Social Work

Web: <https://web.etf.cuni.cz/ETFN-511.html>



Assoc. Prof. PhDr. Eva Křížová, Ph.D.

Head of the Department of Social Work

Her background is in sociology. She is responsible for Sociology, Research Methods, and optional courses like International Social Work and Social Problems in Advanced Societies. Her focus is the sociology of health and medicine. She has published scientific articles in prestigious international journals and is the author of several monographs. She was active in coordinating international Intensive Programmes under the Erasmus programme (COHCA, INCCAR, EVIBAS).





PhDr. Jaroslava Šťastná, Ph.D.

Sociologist responsible for Theories in Social Work, Community Social Work and Social Economy. Her teaching, research, publications and other activities focus mainly on theories and methods of social work, social economy, and community work. Current courses taught: Diversity Inclusion for Social Cohesion (BIP), Introduction to Social Work, Social Economics, Selected Topics of Community Work, and Theories of Social Work.



Mgr. Eliška Hudcová, Ph.D.

Social worker and anthropologist, researcher and lecturer at the Protestant Theological Faculty in Prague. She oversees Case Social Work, Social Work in Churches, Social Farming, and Social Economy courses. In addition to her academic and educational activities, she actively helps individuals overcome their financial issues.



Mgr. Alžběta Matochová

Is a social worker responsible for Methods in Social Work. She focuses on research on informal caregivers and their effective coping strategies. Current courses taught: Methods of Social Work, Diversity Inclusion for Social Cohesion (BIP), Social Work with Ethnic Minorities, Selected Topics of Community Work, and Theories of Social Work.



Mgr. Karel Řezáč, Ph.D.

Social worker responsible for Qualitative Research Methods, Family Social Work, and Professional Performance in Social Work. His previous experience includes social work in foster family care in a non-governmental, non-profit organisation responsible for children's social and legal protection.





JUDr. Daniel Bartoň, LL.M., Ph.D.

Is a Czech lawyer, theologian, researcher and lecturer at the Protestant Theological Faculty in Prague. He is responsible for Basics in Law for Social Workers and optional courses. His particular fields of interest are religious freedom, abuse of power and victims of violence. He has represented numerous victims of sexual violence.



Mgr. Ing. Olga Angelovská, Ph.D.

A sociologist specialising in social and public policy, health care research, and the social security system. Responsible teacher for Global Social Policy and Social Security System courses. She also works as an assistant professor at the First Faculty of Medicine and at the Faculty of Social Sciences of Charles University, where she teaches in Czech and English programmes.



PhDr. Pavel Pěnkava, Ph.D.

Is a social worker and social curator responsible for Methods in Social Work, Social Work with Marginalised and Disadvantaged Populations, and Theories of Social Work. He loves photography, so he is also our photographer.



Mgr. Olga Starostová

A sociologist and Social Services expert focusing on long-term informal care and ageing, works as an expert in the Ministry of Labour and Social Affairs and as a teacher at the Department of Protestant Theological Faculty of Charles University. She was one of the leading persons in The Care at Home Project of the Diakonia of the Evangelical Church of Czech Brethren.



Mgr. Alena Glajchová, Ph.D.

Sociologist and anthropology. Her research focuses mainly on the sociology of health and medicine. Her long-term research focuses on formal and informal care provision, transnational care, vulnerable populations, health inequalities. She is also interested in sociology of gender, sociology of emotions and sociology of migration. In the field of social work, she focuses on issues of discrimination, marginalization and the provision of health care to vulnerable individuals.

Mgr. et Mgr. Dagmar Halo, Ph.D.

Graduated from psychology, completed her PhD study in clinical psychology. She is responsible for psychology courses and crisis intervention. She has a large practical expertise in provision of services to people experiencing life crises.

Participating teachers from other departments of the Protestant Theological Faculty



Mgr. Petr Jandejsek, M.A., Th.D.

Is a theologian and social worker who specialises in modern Christology, theology of liberation, human rights, and theological anthropology.



Mgr. Ing. Ondřej Fischer, M.A., Ph.D.

Philosopher ethicist, specialised in professional ethics in social work and social services.



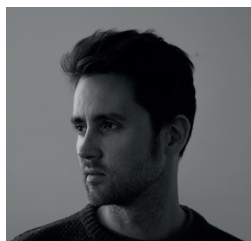
Guest speakers:



Prof. Dr. Berthold Dietz

Professor of Sociology; Head of the Master's Program in Social Management, Protestant University of Applied Sciences Freiburg.

Originally working in poverty research, Berthold Dietz focused on the socio-political consequences of the relationship between life situations and life phases, particularly regarding care policy. These aspects were combined in work-life balance solutions and demographically oriented leadership work in administration and the social economy.



MSc. Jiří Pasz

He graduated in Humanitarian Aid and Social Work at the Cyril and Methodius Theological Faculty of the University of Olomouc and completed his master's degree in International Development in Utrecht, the Netherlands.

He has visited 60 countries around the world and collaborated with several non-profit organisations and international institutions: he documented child soldiers in Uganda, a caste of prostitutes in Nepal, skateboarders and punks in Burma, devastated Haiti, and refugees in Jordan or Zambia. He has worked as a social worker with the Roma and on the destigmatisation of people with mental illness. His achievements include photography exhibitions abroad, participation in two documentary films, and he published three books.





Prof. Dr. Stephanie Goeke

Is a graduate pedagogue and has been a professor of Social Work and Research in Social Work for the last 5 years. She teaches at the Protestant University of Applied Sciences in Ludwigsburg. Her areas of interest include gender issues in social work, social space, inclusive pedagogy and participatory research. She is involved as an equal opportunities officer at her university to create an inclusive and discrimination-free university. She is also interested in international social work and supports the university's numerous partnerships.



FH-Prof. DSA MMag. Dr. Christian Stark

Graduated from the Universities of Salzburg and Innsbruck with a Master of Theology, a Master of Pedagogics and political sciences and a Doctor of Pedagogics and gained a Social Work Diploma at the Academy of Social Work in Innsbruck. He worked for 12 years with homeless people as a streetworker and a manager of a day centre; from 2000 to 2002, he was Executive director of an Association for drug counselling and from 2002 to 2005 manager of an association for assisted living for handicapped people.

He has been a professor of Social Work at the University of Applied Sciences Upper Austria since 2004 and the Head of the Master's Programme in Social work since 2010. He became vice-dean for research and internationalisation at the same university in 2013 and dean in 2019 for the faculty of medical engineering and applied social sciences.





Lect. Ph.D. Petronela (Polixenia) Nistor

Is a Lecturer at the Faculty of Orthodox Theology, „Alexandru Ioan Cuza” University of Iași. She holds a Ph.D. in Sociology and Theology, and her research focuses on the relationship between the Church, philanthropy, and social work, emphasizing the integration of Christian values into community support. She has conducted studies on religious education, social work, and the Church's role in society, actively participating in educational and social projects. Through her interdisciplinary research, she seeks to develop social work models tailored to contemporary challenges, promoting a holistic approach to community support, where faith, solidarity, and social responsibility play a fundamental role.



MA Karen-Pauliin Konks

Is a junior lecturer at the University of Tartu. She teaches the following bachelor's courses: Introduction to Social Work, social well-being across the lifespan and science-based prevention. Her topics of interest are also occupational violence against child protection workers, safeguarding in sports, prevention in child welfare and skills needed in social work. She has over 7 years of experience working in the field of child welfare and currently leads a prevention unit at the Estonian Social Insurance Board.





PhDr. Michal Imrovič, Ph.D.

Associate professor, director of the Institute of Social Work and Social Policy, Faculty of Social Sciences, University of Ss. Cyril and Methodius in Trnava

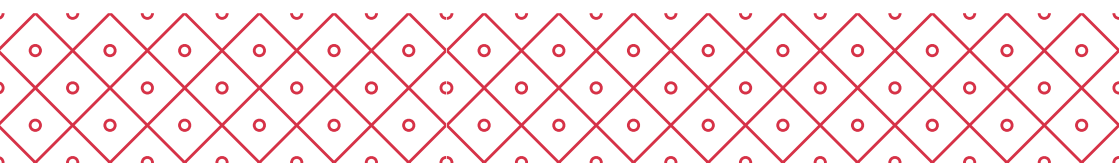
Graduated with a master's degree in political science from the Faculty of Arts of the University of Constantine the Philosopher in Nitra. He defended his doctorate in the Public Policy and Public Administration study program at the Faculty of Social Sciences of the University of Ss. Cyril and Methodius in Trnava. He focuses on civil society, youth, and the third sector in the context of social policy and social work. He is the author of several scientific papers, university textbooks and monographs. He actively participates in national and foreign projects.



Assoc. Prof. PhDr. Peter Slovák, Ph.D.

Deputy Director for Scientific Research, the Institute of Social Work and Social Policy, Faculty of Social Sciences, University of Ss. Cyril and Methodius in Trnava

He completed his doctoral studies at the University of Trnava. In 2017, he habilitated in the field of Social Work at the St. Elizabeth University of Health and Social Work in Bratislava. Currently, he teaches at the Institute of Social Work and Social Policy, the Faculty of Social Sciences, and the University of St. Cyril and Methodius in Trnava. His main professional focus is on selected methods of social work and issues of social-psychological aspects in human life with the practice of social work, like the psychosocial balance of the clients in the context of empowerment and spirituality. He is the author of several university textbooks and monographs.



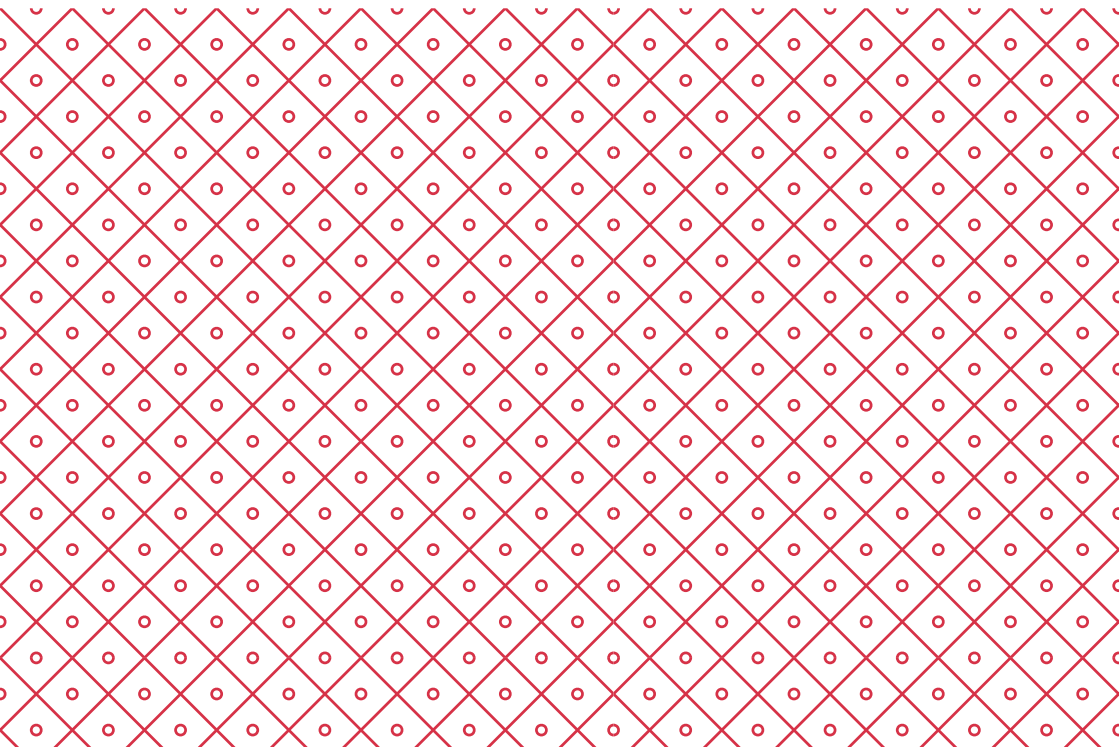
***We look forward to seeing you at the occasion of the
1st International Days of Social Work at the Protestant
Theological Faculty, Charles University in Prague, with
its formal and informal meetings, discussions,
and fruitful atmosphere!***

The team of the Department of Social Work
at the Protestant Theological Faculty of Charles University





**Evangelická teologická
fakulta**
Univerzita Karlova



Charles University
Protestant Theological Faculty
Černá 646/9
110 00 Prague 1
www.etf.cuni.cz

This brochure is also downloadable on our website link.cuni.cz/IDSW25_PTF

The text was not submitted to professional language proof reading.

© 2025, Pavel Pěnkava and the Protestant Theological Faculty of CU